



McGRATH & Co.

The Canadian Magazine Building

200 ADELAIDE STREET WEST

*Boutique Brick-and-Beam
Office Suites*

FOR LEASE



200 Adelaide

STREET WEST

Refined, professional office space in a prominent downtown tower with modern finishes, expansive windows, and immediate access to Toronto's PATH network.

OVERVIEW

Beautifully restored brick-and-beam suites

Positioned at the intersection of Adelaide Street West and University Avenue, 200 Adelaide Street West offers a premier leasing opportunity within Toronto's Financial District. This well-established office tower delivers efficient, high-quality workspace designed to support today's professional environment. Bright suites, modernized common areas, and seamless connectivity to the PATH network create a highly functional and convenient setting for businesses. Surrounded by major financial institutions, legal firms, and corporate headquarters, the property is ideally suited for tenants seeking a prestigious address in the core.

- Restored 1913 brick and beam construction
- High ceilings with exposed timber beams
- Large windows offering exceptional natural light
- Units from 3,136 SF to 4,486 SF available
- Character-rich interiors for professional firms
- Prime Adelaide & University location

AVAILABLE SUITES

Suite 300

4,486 SF

Suite 400

3,136 SF



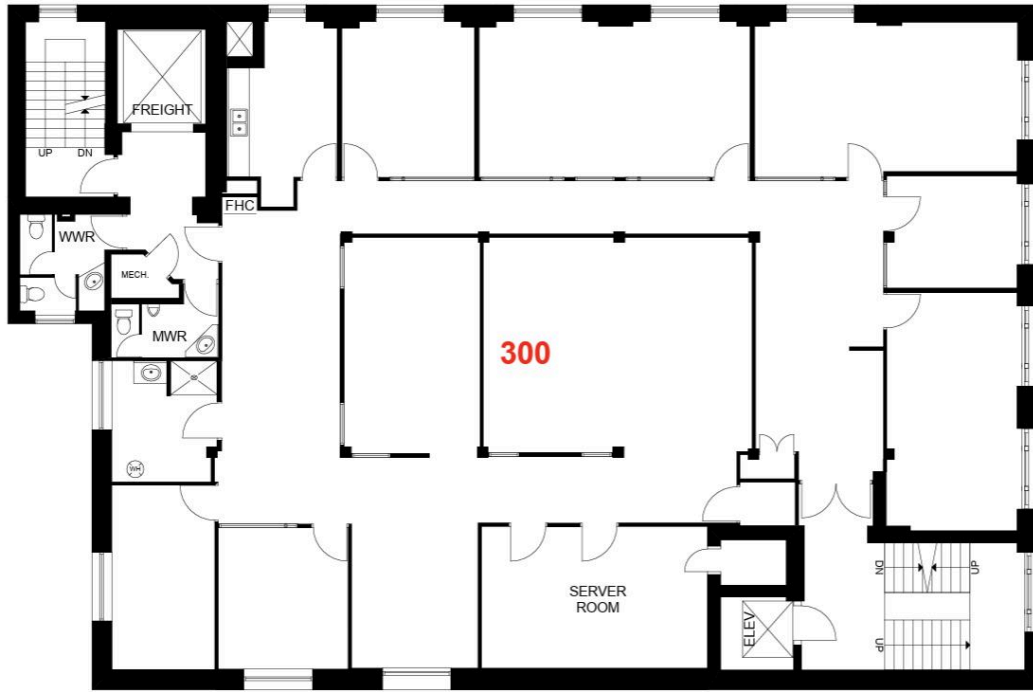
FLOOR PLAN

200 Adelaide

Suite 300

STREET WEST

4,486 SF



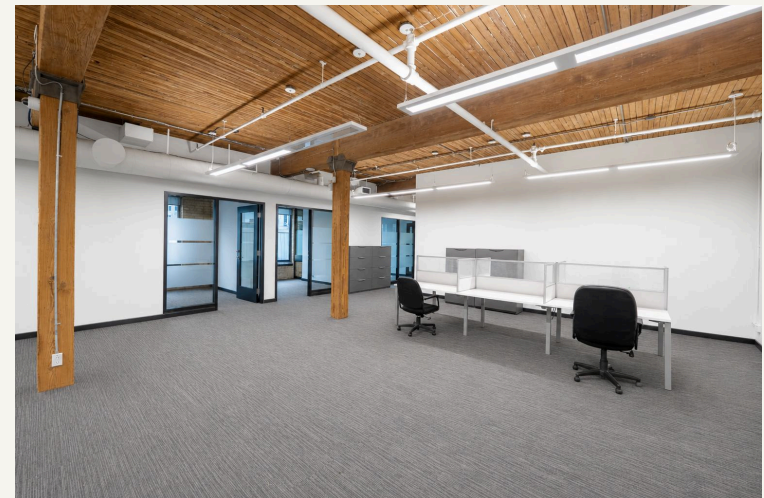
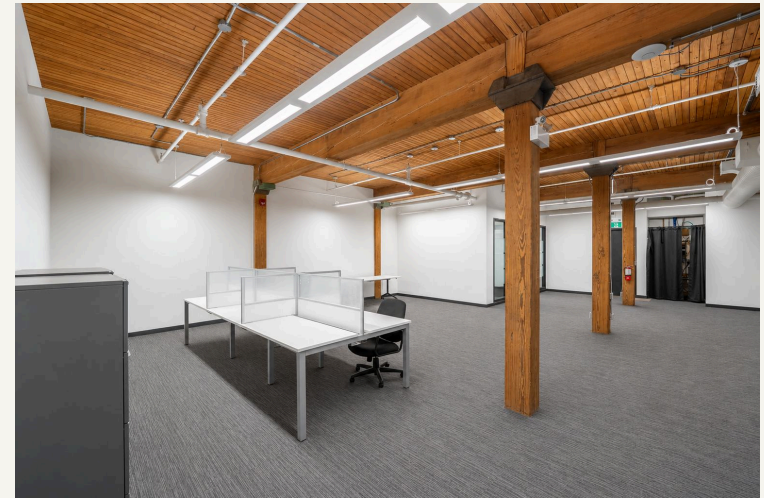
FLOOR PLAN

200 Adelaide

Suite 400

STREET WEST

3,136 SF





200 Adelaide

STREET WEST

LEASING ENQUIRIES

leasing@mcgrath-properties.com

mcgrath-properties.com

Preserving heritage. Building value.